



SIERRA
CLUB
FOUNDED 1892

PRAIRIE DISPATCH

No. 27 Vol. 6

Newsletter of the Sierra Club, Cimarron Group

DEC 2004 - JAN 2005

Explore, enjoy and protect...

View from the chair by David Franklin

This is my last column as chair since my term is up, so please excuse me if I ramble a bit. In the midst of all the shouting during the last election, it is all too easy to forget the progress that has been made in the last forty years. The air is cleaner today than it was 40 years ago. The water is cleaner today than it was 40 years ago. There are more lands protected as federal wilderness than there was 40 years ago. Yes, there are loads of problems. Yes, we are literally swimming in shit when we swim in the Illinois river, the CAFE standard for SUV's needs to be raised and many more issues confront us.

But guys, tomorrow the sun will rise, the day will begin again, and we need to have the energy and the emotions to go forth once more and do our part for the environment. And if we go to bed at night feeling guilty, or frustrated, or defeated or finished we will get burned out, turned off and out of the battle. I've seen it happen over and over again, there are many eco-warriors who have left the active leadership of the club over the years due to this very thing.

The Sierra Club is first and foremost a conservation organization, but let's remember that our mission statement is: "Explore, enjoy and protect the planet." Notice that it begins with "Explore" and "enjoy" which echo our founder John Muir's vision, get out there and explore and enjoy the outdoors and you will want to save it.

I have quoted the Nike magazine ad shown below many times before in the newsletter, but it really spoke to me personally (*advertising*, can you believe it?) and it echoed in head over and over again on my last backpack as I was getting tired that last mile into camp. As you read it's words, remember, explore *and* enjoy, don't just protect!

- You could get mauled by a bear and die.*
- You could get bit by a snake and die.*
- You could fall off a cliff and die.*
- You could get gored by a bison and die.*
- You could get struck by lightning and die.*
- You could get shot by a hunter and die.*
- You could get attacked by fire ants and die.*
- Or you could stay at home on the couch, eat potato chips and die.*
- Just do it. • Nike ACG Ad*

The Cimarron Group of the Sierra Club meets the 3rd Monday of each month, (except Dec.) at 7:30 at the Warr Acres Community Center
4301 N. Ann Arbor
 (Between Meridian & MacArthur Blvd.)
Please Join Us!

Party Time!

Time is drawing neigh for our Annual Christmas Party!!!

Sunday, December 12th, 5-9:00

Elks Lodge - 4711 N Tulsa Ave -

We're very excited because we were able to reserve the Main Ballroom! This means tons of room to socialize, display/view/purchase silent auction items, spread out our delicious food w/ big round tables on which to eat, great viewing for the Awards Ceremony & last but not least, a very long OPEN bar

- Decorations galore
- Great people
- Unbeatable silent auction buys

Continued, see "Party" on page 2

January Program

Join us on Monday, January 17th at 7:30 as we present a program on "Youth and the Sierra Club." We will feature a presentation from Inner City Outings Chair Jay Trenary, along with other guests.

Inner City Outings (ICO) is a community outreach program of the Sierra Club. Our volunteer leaders, trained in recreational, outdoor and safety skills as well as environmental education, provide wilderness adventures for people who wouldn't otherwise have them.



SIERRA
CLUB
FOUNDED 1892

CONSERVATION CORNER

by James Martin, conservation chair

Well, the election was disappointing, but we need to move on. One way to do that is to return to local issues and resume the campaigns on hold.

One campaign yet to come to the table is "environmental justice." Some may have only a vague idea of what EJ means. Basically, it recognizes that environmental degradation usually has economic incentives and social costs. And, believe it or not, the folks reaping the benefits are not those who pay the costs. In social accounting, or in environmental economics, these costs are called "externalities." They are external to the profit/loss statement, and so are ignored by those who focus on that bottom line. So, due to faulty accounting, one group of folks rip off another group of folks and call it economic. This is one kind of environmental injustice.

There is also injustice in the built environment in places like sprawling Oklahoma City. Some injustice comes from location decisions for highways, malls or industrial facilities. Or, it follows the spatial distribution of income and the tax-base. Some neighborhoods maintain an exclusive social/economic status, for example, to the extent of putting up walls and gates. People outside the wall get bad infrastructure, urban

pollution, poor schools and crime. People inside the wall sit on the city council, get appointed to advisory committees, and generally run the show. The desire for social and political exclusion drives sprawl just as much as the automobile, and no anti-sprawl campaign is complete without environmental justice.

Two issues lie behind the walls also dividing ethnic groups:

- 1) The brownfields in the predominantly African American northeast Oklahoma City;
- 2) Environmental concerns across the river in the latino community. Our campaign will attempt to build organization strength, as well as yield environmental results.

For more information, or to help with these campaigns, contact conservation chair James Martin at james.e.martin@cox.net.

**OKLA. CITY: Town & Country Village,
122nd & N. May Ave. A (405) 751-7376**

Backwoods



PATAGONIA
VASQUE
MOUNTAIN HARDWEAR
ASOLO
BLUEWATER
SAGE

Party, Continued

There are a few things that are needed in preparation for this exciting event.

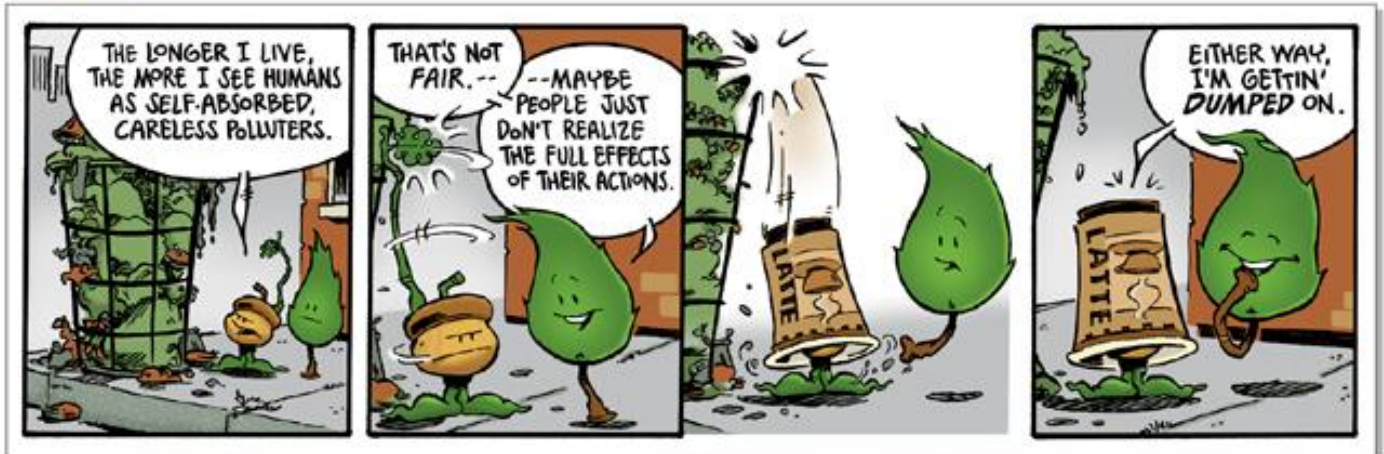
- Volunteers are needed to cook turkeys to bring and expenses incurred will be reimbursed.
- Volunteers are needed to help decorate the Ballroom from 3-5:00pm. Come on! What better way to lend us your creative side and get into the Holiday Spirit. There's nothing like the joy of decorating for Christmas!

- Start planning now for the side dish that you want to bring. We usually have an abundance of store bought pastries.
- AuCTION ItEmS, AuCTION ItEmS, AuCTION ItEmS, AuCTION ItEmS!!!

If you have any suggestions, plan to volunteer or have questions, please feel free to call Jeanie anytime at 474-5754. Looking forward to hearing from you and seeing you there!

RUSTLE THE LEAF

BY PONCÉ & WRIGHT



© 2004 GO NATURE! COMPANY, LLC. RUSTLETHELEAF.COM

Memorial for Member Larry Swanson.

The Sierra Club along with the men's group from Larry Swanson's church have joined together to plant a tree in memory of Larry at Martin Park. Join us Saturday, December 11th at 11am at Martin Park Nature Center for a short service and tree planting ceremony. Martin Park is located on Memorial Road between MacArthur and Meridian in NW Oklahoma City.

Help Wanted

We are looking for someone to become our newsletter editor. This person will be responsible for producing the newsletter every other month and coordinating the mailing of the newsletter. If you are interested, please contact David Franklin at dfranklin@ussok.com or Kathy Scurlock at kascurlock@cox.net. We are also looking for someone to coordinate our trail maintenance trips four times a year.

Group Executive Committee Elections

It's time once again to elect officers for the executive committee for the local Sierra Club group. These individuals have budget, planning and overall responsibility for the activities of the Cimarron Group of the Sierra Club, and the chair is elected from among the members of this board.

This year, we were only able to recruit five candidates for the five open seats. While the candidates are running un-opposed, we are required in our bylaws to have an election.

Please indicate your approval of the candidates selected by the nominating committee, by marking up to five names below. For those households with two members in the home, please mark both columns.



Primary Member >
 Secondary Member >

Kathy Cunningham

I joined the Sierra Club in 2001 to participate in the outings program. I grew up camping in the mountains of New Mexico and Colorado, as well as the various parks and recreational areas in Oklahoma, and wished to spend more time outdoors. The many and varied Sierra Club outings in which I have participated have been very enjoyable. I have served as secretary to the Executive Committee for about two years, and have held voting member status for the last year. Through this experience I have gained knowledge and increased interest in environmental issues and hope to continue in that capacity for another term.

Susie Shields

Having served the Oklahoma Sierra Club for the past 13 years in many capacities, I hope my experience will benefit the Cimarron Group ExCom. I have held many positions, including group and chapter conservation chair, group and chapter legislative chair, group vice-chair, chapter chair and newsletter editor. The Sierra Club has continually been an important part of my life and I want to help wherever needed.

Lois Pokorny

I have been a member of Sierra Club since 1983, because I believe strongly in the club's mission. In the past I've served on the excom and I've been the conservation chair. I will work to increase Sierra club's membership and influence in Oklahoma. I enjoy the great out-of-doors, and have been on a national trip (Chaco Canyon) and many local trips.

Jay Trenary

I am serving as the Inner City Outings Chair currently, a member since 2001 and on the executive committee for the last two years.

James Martin

I am serving as the conservation committee chairman currently, a member since 2000 and on the executive committee for the last two years. I also currently serve on the chapter (state-wide) executive committee as vice-chair.

Once you have completed your ballot, please detach and mail it to:
Sierra Club • P.O. Box 22732 • Oklahoma City, OK 73123

"Every good thing, great and small, needs defense." — John Muir

Join today and receive a FREE Sierra Club Weekender Bag



My Name _____
 Address _____
 City _____
 State _____ Zip _____
 email _____

Check enclosed, made payable to Sierra Club
 Please charge my Mastercard Visa
 Exp. Date ____/____/____
 Cardholder Name _____
 Card Number _____

Membership Categories	INDIVIDUAL	JOINT
INTRODUCTORY	<input type="checkbox"/> \$25	
REGULAR	<input type="checkbox"/> \$39	<input type="checkbox"/> \$47

Contributions, gifts and dues to the Sierra Club are not tax deductible; they support our effective, citizen-based advocacy and lobbying efforts. Your dues include \$7.50 for a subscription to *Sierra* magazine and \$1.00 for your Chapter newsletter.



SIERRA CLUB
 FOUNDED 1892

F94Q W3804 1
 Enclose check and mail to:
Sierra Club
P.O. Box 52968
Boulder, CO 80322-2968

SIERRA CLUB
 Cimarron Group
 Post Office Box 22732
 Oklahoma City, OK 73123

Volunteer Directory

Executive Committee (ExCom)

The ExCom meets on the first Wednesday of every month from 7:30pm to 9:00pm. All Club Members are welcome to attend, please contact any ExCom member for the current month's meeting location.

Chair	David Franklin	789-5377
Vice-Chair	Bill Scimeca	879-2040
Secretary	Kathy Cunningham	942-6911
Treasurer	Kathy Scurlock	942-6343
Member	Esther Houser	282-8074
Member	James Martin	361-2373
Member	Cindy Stone	942-9340
Member	Olivia Waldkoetter	821-2304
Member	Jay Trenary	831-5535
Member	Brian Brandert	722-7615

Committee Heads

For more information on a an activity, contact the respective committee head listed below.

Conservation	James Martin	361-2373
Conservation Vice-Chair	Esther Houser	282-8074
Outings	Bill Scimeca	879-2040
Inner City Outings	Jay Trenary	831-5535
Social	Jeanie Herndon	
Legislative	Olivia Waldkoetter	821-2304
Membership	Olivia Waldkoetter	821-2304
Enviro. Educ.	Susie Shields	297-0179
Programs	Susie Shields	297-0179
Volunteer Coordinator	Susie Shields	297-0179

The PRAIRIE DISPATCH is published for the benefit of the members of the Cimarron Group of the Sierra Club. Group members receive this publication free. Non-members may subscribe at the rate of \$10 per year. Send subscription requests to Andy Scurlock, 3333 NW 20th, Oklahoma City, OK 73107 (Ph:942-6343) or tascurlock@cox.net.

Editorial opinions are those of the writers and do not necessarily reflect the official positions of the Sierra Club. Dues, fees and contributions to the Sierra Club are NOT tax deductible. Address correspondence to: EDITOR, P.O. Box 22732, Oklahoma City, OK 73123.

To advertise in the Prairie Dispatch, please contact the Editor. \$7 per column inch with a minimum purchase of 2 column inches.

Senior Editor: Open. Assistant Editors: Kathy Scurlock, David Franklin
 See our website for more info: oklahoma.sierraclub.org/cimarron

Non-Profit Org. U. S. Postage P A I D Okla. City, OK Permit No. 1156
--

See us on the web at oklahoma.sierraclub.org/cimarron