

Explore, enjoy and protect the planet

Sierra Club, Oklahoma City Regional Group



PRAIRIE DISPATCH

No.26, Vol. 6, Nov-Dec, 2003

EXCITING TIMES!!

These are exciting times in the Sierra Club, and in the environmental movement in general. Earlier this year, the Oklahoma Chapter (i.e., the State organization) lost it's only employee in the state, Jeannine Hale. This was a big loss, as Jeannine

VIEW FROM THE CHAIR

by David Franklin

was not only a talented attorney well versed on the issues, but also she was passionate in her beliefs when it came to the environment. Recently, I had the opportunity to sit in on the interviews for the next person to hold that job. While each candidate offered a unique set of qualities for the job, I was struck by how strongly each one felt about the environment. It is encouraging to me to know that the next staff person for the club in Oklahoma will treat it almost like a calling, and not just a job. And speaking of quality candidates, I am pumped when I look at the roster of candidates for both the Oklahoma

City Group executive committee and the Oklahoma Chapter. While we have had and continue have quality folks serving, it's neat to see some new names with so much to bring to table.

The Sierra Club has undertaken a project to survey executive committees nationwide. They have spent money training facilitators, publishing materials, spent a large amount time by leaders both nationally and regionally and invested in other areas to make sure that this survey happens. Why spend this money? Because they have set a goal to double the membership and want to know what makes people get involved with the club. Because they feel that the time is now to move to the forefront of the political process and make sure that the environment is an issue in the next election. The environment is under

(See VIEW, Continued on back page)

November Meeting:
Monday, Nov. 17, 7:30pm
Warr Acres Community Center
4301 N. Ann Arbor
(Between Meridian & McArthur Blvds.)

No Meeting in Dec.
CHRISTMAS PARTY
!!!!NOTICE!!!!

!!JAN. MEETING IS THE 26TH!!
The Oklahoma City Regional Group of the Sierra Club meets the 3rd Monday of each month, **except December.**

>>NOV - DEC PROGRAMS<<

Nov. 17th. India Givan will present an overview of natural house building, particularly straw-bale construction, and how it relates to permaculture. It will touch on the history of straw-bale construction in America, aspects of healthy homes, building techniques, and integration of the structure into the landscape, to include water catchment,

(See GIVAN, Continued on page 3)

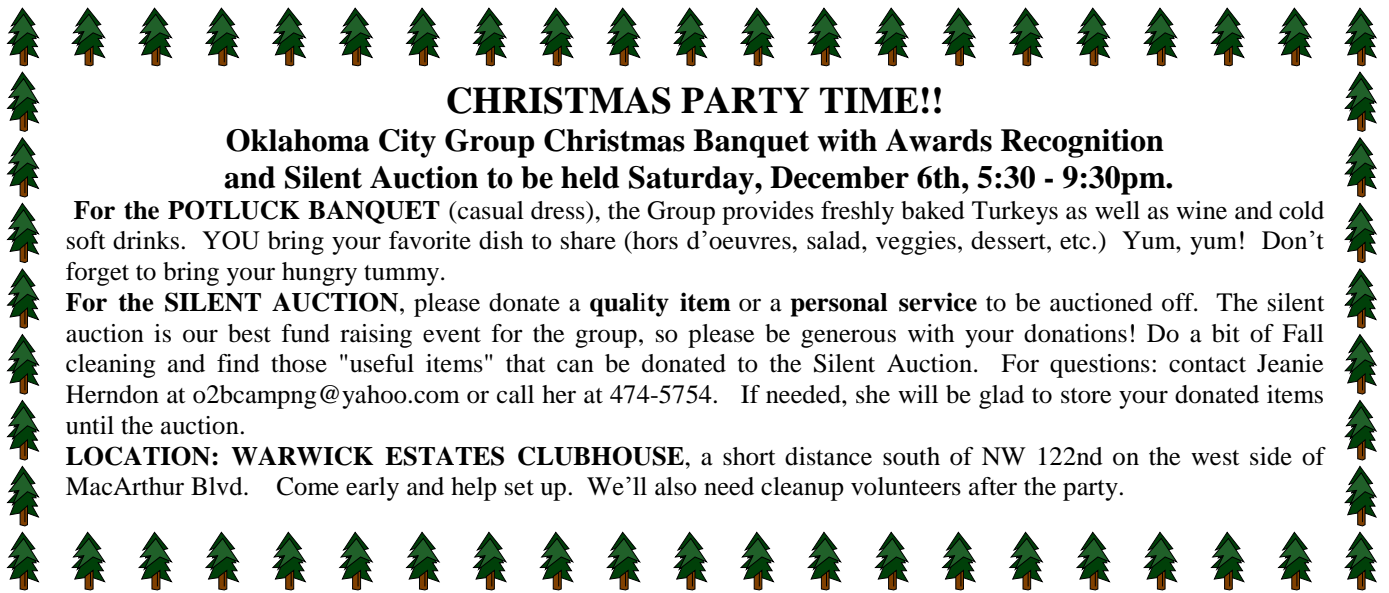
CHRISTMAS PARTY TIME!!

Oklahoma City Group Christmas Banquet with Awards Recognition and Silent Auction to be held Saturday, December 6th, 5:30 - 9:30pm.

For the POTLUCK BANQUET (casual dress), the Group provides freshly baked Turkeys as well as wine and cold soft drinks. YOU bring your favorite dish to share (hors d'oeuvres, salad, veggies, dessert, etc.) Yum, yum! Don't forget to bring your hungry tummy.

For the SILENT AUCTION, please donate a **quality item** or a **personal service** to be auctioned off. The silent auction is our best fund raising event for the group, so please be generous with your donations! Do a bit of Fall cleaning and find those "useful items" that can be donated to the Silent Auction. For questions: contact Jeanie Herndon at o2bcampng@yahoo.com or call her at 474-5754. If needed, she will be glad to store your donated items until the auction.

LOCATION: WARWICK ESTATES CLUBHOUSE, a short distance south of NW 122nd on the west side of MacArthur Blvd. Come early and help set up. We'll also need cleanup volunteers after the party.



HOTLINE: REPORT POLLUTION COMPLAINTS TO OKLAHOMA DEQ - 1/800/522-0206

CONSERVATION COMMITTEE of the SIERRA CLUB OKC REGIONAL GROUP

Our November 17th meeting will be at **6:15pm** just before the regularly scheduled Group meeting on the third **Monday of the month**. Try to be there a few minutes early so we can start promptly on time. See you there.

Thanks! Esther Houser, Group Conservation Chair

WINDPOWER GENERATED ELECTRICITY FOR THE HOME by Aubrey Arrington

I just finished signing my household up for electricity generated by windpower from OG&E. The wind power surcharge is \$0.02/kwH, BUT then one is exempt from the Fuel Adjustment Fee (see your OG&E monthly statement) that raises the price per kwH as the price of natural gas goes up. An "allocation block" is \$2/100 kwH (i.e. \$0.02/kwH).

There are two options for purchasing the windpower; 1) If one buys an "allocation", say 7 blocks (700 kwH), but uses only 600 kwH that month, one still has to pay the 7 blocks surcharge of \$2/100kwH, or option 2) If one chooses the "100% windpower option", the surcharge is made on actual monthly consumption at the rate of \$0.02/kwH. Either option is for a three month period, but may be cancelled or altered after the three month period. The preferred option is #2 if using less than 2000 kwH/mo.

Review your monthly OG&E statements to determine your monthly kwH consumptions. Then call 272-1010 and speak with a Customer Service Representative in the billing department to mail you a signup form. Service starts with the November billing cycle. As a side note, 100kwH/month of windpower electricity for a year is equivalent to planting a half acre of trees - a great

HOUSEHOLD HAZARDOUS WASTE FACILITY OPENS TUES. SEP. 7, 2003 By Sarah Molina, Staff

Writer

Oklahoma City residents soon will have a place to take household hazardous wastes year-round. "There are some municipalities that do one-time events, but there are none in the state that do this all the time," said Lyndel Gibson, manager of the **Household Hazardous Waste Collection Facility, at 3738 SW 15 (Ph. 682-7038 for information and directions)**. The facility will be collecting items such as motor oil, antifreeze, pesticides, herbicides and arts and crafts materials.

Gibson said the facility will not take explosives, biohazardous materials, radioactive materials, ammunition, tires or "white" goods such as refrigerators and freezers. "But everything else you generate at your house -- more than likely we'll take it," Gibson added. "Of course, we won't take debris or trash." The free service takes the place of the spring and fall collections that were held at the State Fair Park for seven years. Gibson said there is demand in the city for a year-round site and said previous one-day collections attracted anywhere from 1,200 to 1,600 people with hazardous materials. "Besides the stormwater program, this is one of the programs where we can help clean up the water and eliminate this waste matter from lakes and rivers and keep it out of landfills."

Paul Brum, director of the city's Public Works department, said the city was mandated by the Environmental Protection Agency to have a Household hazardous Waste Facility open to citizens as part of a permit agreement. "People change their own oil and have leftover pesticides and herbicides and scary stuff like hairspray and Drano," Brum said. **The facility will be open from 9:30 a.m. to 6 p.m. Tuesdays through Fridays and 8:30 to 11:30 Saturdays.**

If citizens have materials to drop off, Gibson said people should keep them in their original containers and then put those materials in a box so they won't spill. "If someone brings in a material that is new, that hasn't been opened, we will offer that back out to the citizens to use free of charge," Gibson said. **The service is available for Oklahoma City residents only, who must bring a utility bill and personal identification for verification as an Oklahoma City resident.**

NEED A GIFT FOR CHRISTMAS OR A BIRTHDAY? THINK SIERRA CLUB!!

Our Group is selling USEFUL GIFTS such as Scenic 2004 Calendars, Appointment Books and Shade-grown Coffee,!!! Come to the monthly meetings to purchase: or call Anita Scott for Calendars/Books, and Susie Shields for Coffee (see for coffee pricing - their

>>>>>FUND RAISERS by the OKC GROUP of the OKLA. SIERRA CLUB - <<<<<

CERTIFIED ORGANIC, SHADE GROWN, FAIR TRADE COFFEE FOR SALE

Types Available: (price shown is per 12 oz. bag):

Whole Bean—Custom Blend (\$8), French Roast (\$8), Custom Blend Decaf (\$9)

Drip Grind—Custom Blend (\$8), French Roast (\$8), Custom Blend Decaf (\$9)

Available at Oklahoma City Group meetings the 3rd Monday of each month or from <sshields@cox.net>

RECYCLE PRINTER AND COPIER CARTRIDGES

Bring your expired inkjet and copier cartridges for recycling to our meetings, or give them to any active Group member. We receive from \$1 to \$5 as a fund raising benefit for the Oklahoma City Group of the Sierra Club. See Larry Swanson for info.

INNER-CITY OUTINGS (ICOs)

ICO CHAIR: JAY TRENARY

The following dates are set for outings with
Eisenhower Elementary School:

DAYHIKES: 11/8

To reach the school, go east on Britton Road to a stopsign about 1/2 mile east of the Broadway Extension; turn north about 1/4 mile. The school is on the right and sets back from the road a bit.

These trips will all leave from the school at 8:30am (Adults please arrive by 8:15) and return at approximately 5:00pm.

Prior registration is needed to go on any of these trips and which ones you will try to make. It greatly helps my planning if I know how many adults I have to work with as far in advance as possible.

Outings , Etc.

CONTACTING OUTINGS LEADERS

Elean Ainette 341-5204 elean1@juno.com
A. Arrington 324-6717,recycleman1@juno.com
John Bass 495-6446,pjbass6446@worldnet.att.net
Dave Franklin 789-5377,dfranklin@ussok.com
Neil Garrison3730309atlatlgarrison@hotmail.com
L. Harris 364-8028Lance.Harris@chguernsey.com
Jim Hood 732-6131, jimhood@cox.net
Jana Johnston 751-1571,janajcpa@hotmail.com
Tom Libby 615-6390,tomlibby@yahoo.com
James Martin 319-1844, frazelberry@yahoo.com
Alan Morris 720-8934 DRMorris40@aol.com
Bill Scimeca 879-2040,wscim@swbell.net
Jennifer Scimeca 879-2040 jenscim@swbell.net

OKC GROUP OUTINGS CHAIR - BILL SCIMECA

Sierra Club outings are open to members and non-members alike. In order to participate on an outing, you will need to sign a liability waiver.

Copies can also be obtained from the Group Outings Chair. Transportation is not a part of the outing. While it is customary for participants to make carpooling arrangements for outings, the Sierra Club does not have insurance for carpooling, ride sharing or anything similar, and assumes no liability for them.

PLEASE NOTE: THE DATES SHOWN FOR EACH EVENT INCLUDE WHOLE TRAVEL DAYS FOR PLANNING

FOR THE LATEST ON OUTINGS, GO TO: WWW.OKLAHOMA.SIERRACLUB.ORG/OKC

NOV 1-2: TRAIL MAINTENANCE, BEECH CREEK NATIONAL SCENIC AREA. Rating: Easy. Fee: None. Limit: 10 from the Green Country Group. A Chapter-wide maintenance effort will be made to care for the Beech Creek trails. We will camp at pretty Cedar Lake Campground south of Heavener on Friday night and on Saturday night. On Saturday we will divide to work on individual trails in the Beech Creek NSA. A trek will be made to Mena for a meal on Saturday evening. Leader: Tulsa area members contact Gary Miller, **Oklahoma City area members contact Aubrey Arrington.**

NOV 8: ANNUAL BANQUET - OKLAHOMA CHAPTER SIERRA CLUB. The Aquarium in Jenks, OK just south of Tulsa.

NOV 15: ICO DAYHIKE. to Wichita Mountains Wildlife Refuge. (Kite Trail) Contact **ICO Leader Jay Trenary.**

NOV. 15-16: BACKPACK IN THE OZARK HIGHLANDS. Join us for cool, crisp mornings and sunny warm autumn days on Section 2 of the Ozark Highlands trail in west central Arkansas. We'll camp on White Rock mountain Friday night and head east on Saturday morning. **Learn about the variety of landscapes and wildlife in the area.** We'll hike 6.5 miles on Saturday over some moderate terrain and past some nice waterfalls (if we get some water soon) and camp at Spirits Creek. Sunday we'll hike out 7.5 miles mostly downhill after a early morning climb over Black Mountain. Required Donation : \$10 for members, \$20 for non-members. **Contact trip leader Lance Harris** for more information.

NOV 15-16: CAR CAMPING, DAYHIKING AT OSAGE HILLS STATE PARK. Join us on what is fast becoming an annual tradition as we enjoy a relaxing weekend car camping and dayhiking beautiful Osage Hills State Park. **Become familiar with the unique environmental features of this scenic area. Contact trip leader Bill Scimeca.**

DEC 6: CHRISTMAS PARTY!! See details on the front page of this issue.

DEC. 13-14: Trail Maintenance, Ouachita Forest. Join us as we do trail maintenance at a time of year that hopefully will see some cooler weather and few bugs! **Learn how trails are maintained and extended without damaging the environment.** Spend Saturday afternoon working on the trail, and Sunday exploring the area. Contact **trip leader Aubrey Arrington**

JAN 26: !!!NOTICE!!! JANUARY'S MEETING IS MONDAY, THE 26TH DUE TO CONFLICTING ACTIVITIES AT THE CENTER - JUST ONE WEEK LATER THAN NORMAL. THE DEADLINE FOR NEWSLETTER ARTICLES AND OTHER ITEMS REMAINS THE SAME - (i.e. the 20th).

(GIVAN, Continued from page 1)

composting toilets, greywater systems, and renewable energy systems.

Givan is an AmeriCorps VISTA volunteer, who is currently working on the Prime Time Family Reading Program, a literacy project based out of the Norman Public Library. During her first year as a VISTA volunteer, India worked in a community gardening project sponsored by the Regional Food Bank of Oklahoma. That program was designed to support community gardens around the metro, and to grow organic produce on the grounds of the food bank for charitable organizations which feed the hungry . She carries a B.A. degree in Sociology and a Master's degree in English. She has taught Freshman Composition and Technical Writing at Oklahoma State University in Stillwater, and also Academic Writing to M.A. level students at the University of Antananarivo in Madagascar.

Dec. 6th - CHRISTMAS PARTY! See details on front page.

BACK-
WOODS
AD

(VIEW, Continued from page 1)

attack from many sides, but as iron sharpens iron, so too has the assault on what we love stirred the passions of those who defend the planet. There is a sense of energy and urgency stirring within the club at a level that I have never felt before. You have a part to play in this success; if you are interested in helping out in politics, conservation, or legislation, please e-mail me at dfranklin@ussok.com and I'll connect you with the right person. Now is the time, and we are the people to get it done! * * *

"Every good thing, great and small, needs defense." — *John Muir*

Join today and receive a FREE Sierra Club Weekender Bag



My Name _____
 Address _____
 City _____
 State _____ Zip _____
 email _____

Check enclosed, made payable to Sierra Club
 Please charge my Mastercard Visa
 Exp. Date ____/____
 Cardholder Name _____
 Card Number _____

Membership Categories INDIVIDUAL JOINT

INTRODUCTORY \$25

REGULAR \$39 \$47

Contributions, gifts and dues to the Sierra Club are not tax deductible; they support our effective, citizen-based advocacy and lobbying efforts. Your dues include \$7.50 for a subscription to *Sierra* magazine and \$1.00 for your Chapter newsletter.



SIERRA CLUB
 FOUNDED 1892

F94Q W 1
 Enclose check and mail to:
Sierra Club
 P.O. Box 52968
 Boulder, CO 80322-2968

2003 OKC Regional Group Volunteer Directory

Executive Committee (ExComm)

The ExComm meets this month at Bill Scimeca's office on Wed., January 8th, 7:30 pm. Call Bill for directions
ALL CLUB MEMBERS ARE WELCOME TO ATTEND!!

Group Chair	David Franklin	789-5377
Vice Chair	Bill Scimeca	879-2040
Secretary	Kathy Cunningham	942-6911
Treasurer	Aubrey Arrington	3 2 4 - 6717
Member	Esther Houser	282-8074
Member	James Martin	361-2373
Member	Anita Scott	3 5 9 - 9319
Member	Cindy Stone	942-9340
Member	Jay Trenary	831-5535

Committee Heads

Conservation Chair	Esther Houser	282-8074
Environmental Educ.	Susie Shields	297-0179
Fundraising	Vacant	
Inner City Outings	Jay Trenary	831-5535
Legislative	Olivia Waldkoetter	821-2304
Membership/V-Mail	Kathy Scurlock	942-6343
Merchandise	Vacant	
Outings Chair	Bill Scimeca	879-2040
Political	Vacant	
Programs	Susie Shields	297-0179
Social	Jeanie Herndon	474-5754
Volunteer Coord.	Susie Shields	297-0179
Webmaster	David Franklin	789-5377

Prairie Dispatch Newsletter

Managing Editor	Larry Swanson	840-2161
Assistant Editor	Kathy Scurlock	942-6343

SIERRA CLUB

OKLAHOMA CITY REGIONAL GROUP
 David Franklin, Group Chair
 Post Office Box 22732
 Oklahoma City, OK 73123

THE PRAIRIE DISPATCH

The PRAIRIE DISPATCH is published 6 times a year for the benefit of the members of the Oklahoma City Regional Group of the Sierra Club. Group members receive this publication free. Non-members may subscribe at the rate of \$10 per year. Send subscription requests to Andy Scurlock, 3333 NW 20th, Oklahoma City, OK 73107 (Ph:942-6343) or tascurlock@cox.net.

Editorial opinions are those of the writers and do not necessarily reflect the official positions of the Sierra Club or the Oklahoma City Regional Group. Dues, fees and contributions to the Sierra Club are NOT tax deductible. Address correspondence to: EDITOR, P.O.Box 18396, Oklahoma City, OK 73154-0396.

ADVERTISING RATES

\$7 per column inch
 with min. purchase
 of 2 column inches
 must be 2 1/2 or 5 inches wide

Ad deadline: 15th of the preceding month

Inquiries:

EDITOR: Larry Swanson 840-2161

Notice to authors:

Articles submitted for the Prairie Dispatch can be in cursive, typed, on disk or sent e-mail (LNSWANSON@JUNO.COM). If disk, please write your name on the diskette, and write the name and version of the word processor used. Please save in ASCII format, as well. Your name will help to get the diskette back to you - and please, observe the deadline which is officially the nite of the monthly general meeting (3rd Monday of each

Non-Profit Org.
 U. S. Postage
 P A I D
 Okla. City, OK
 Permit No. 1156

**PRINTED ON TREE-FREE PAPER MADE FROM KENAF
 & PRINTED WITH SOY-BASED INK**

**SIERRA CLUB OKLAHOMA CHAPTER HOTLINE: (405) 945-1998
 FOR MORE INFORMATION, CALL AND LEAVE A MESSAGE,**